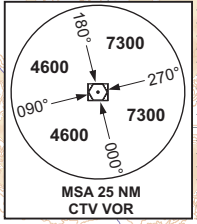
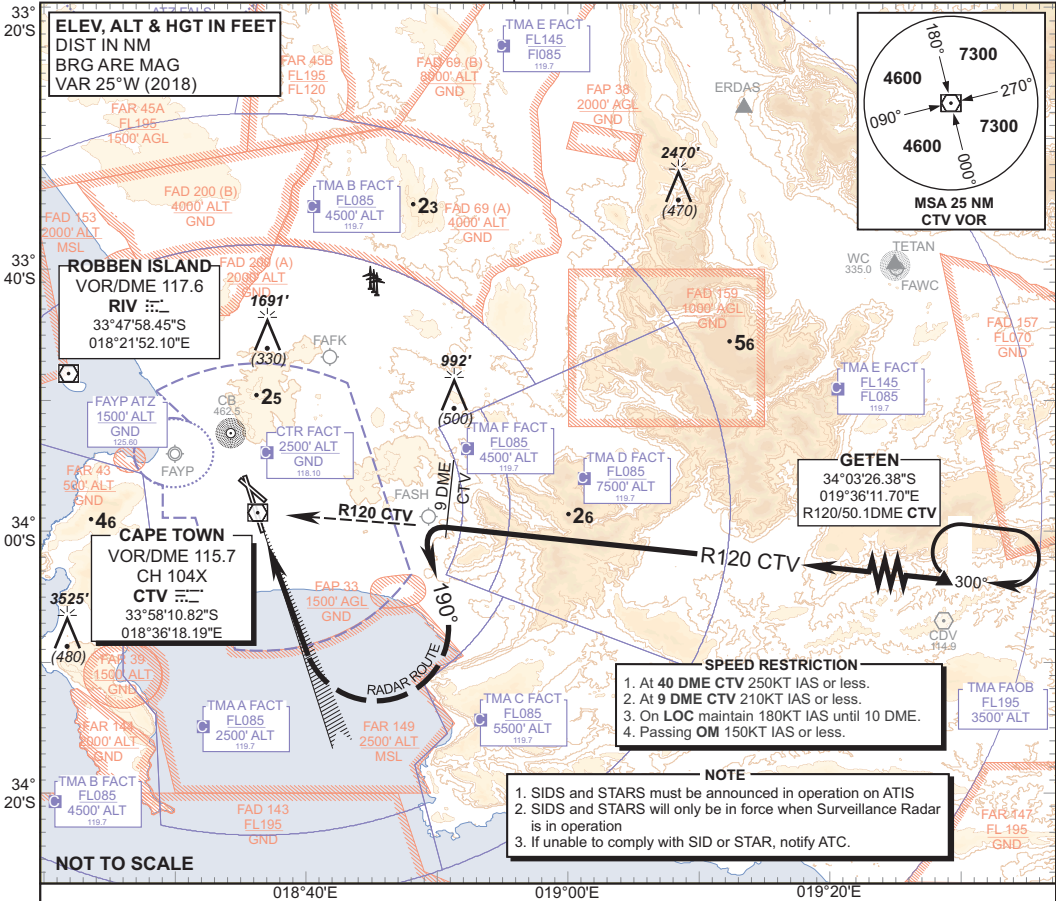


**STANDARD ARRIVAL  
CHART -  
INSTRUMENT  
(STAR)**

TRANSITIONAL ALTITUDE  
**7500'**  
TRANSITIONAL LEVEL  
**ATC**

APP 119.70  
TWR 118.10  
ATIS 127.00

**CAPE TOWN INTL  
RWY 01  
GETEN 1A**



- SPEED RESTRICTION**
1. At 40 DME CTV 250KT IAS or less.
  2. At 9 DME CTV 210KT IAS or less.
  3. On LOC maintain 180KT IAS until 10 DME.
  4. Passing OM 150KT IAS or less.

- NOTE**
1. SIDS and STARS must be announced in operation on ATIS
  2. SIDS and STARS will only be in force when Surveillance Radar is in operation
  3. If unable to comply with SID or STAR, notify ATC.

**GETEN 1A** : Leave GETEN on R120 CTV. Passing 9DME CTV turn left to track 190° for radar vectoring onto the ILS RWY 01.

**COMMUNICATION FAILURE PROCEDURE (Squawk 7600)**

**Before GETEN:** Proceed to and enter the GETEN hold. Hold at last assigned level for minimum 5 minutes, then climb/descend to FL100 in the hold. Leave GETEN at FL100 and continue on the "After GETEN" Communication Failure procedure.

**After GETEN:** Continue on the routing for the GETEN 1A STAR, maintain last assigned level. Crossing R156 CTV on track 190° turn right direct CTV then descend to 6500' ALT. On reaching CTV complete the VOR/DME/ILS approach and land RWY 01.

- Note:**
1. Routing (including MNM Noise Routing).
  2. Due to terrain do not cross West of R210 CTV.
  3. To avoid high ground, when established on track 190° and below 5700' ALT, do not exceed 16DME CTV.

In the event of a missed approach with the intention of diverting to an alternate aerodrome, proceed as follows:

- To the East: Follow the routing for the TETAN 1C SID.
- To the South-East: Follow the routing for the OKTED 1A SID.
- To the North: Follow the routing for the KODES 1A SID.

APP Frequency changed only  
CHANGE: No other changes were performed